



[www.etsy.com/uk/shop/SeyhallCrochetDesign](http://www.etsy.com/uk/shop/SeyhallCrochetDesign)



# Box Tank Top XL



Pattern Size    Chest cm (in) 116 (45)    Length cm (in) 70 (27.5)

Equipment    4 mm Crochet Hook,  
stitch markers  
Large eye needle

Yarn    Paintbox DK cotton in    Total weight 350 g  
1 x 50 g ball of White, Blue, Red, Black, Green, Orange, Yellow, Beige

This pattern uses stitch counts to achieve sizes so it is important to match the tension as closely as possible. Change hook size to achieve stitch count if necessary.

Tension    15 st x 10 rows = 10cm x 10cm approx

### US Crochet Terms

Abbrevs:	ch	chain	sc2tog	sc two together
	sl st	slip stitch	dc3tog	dc three together
	sc	single crochet	st	stitch
	dc	double crochet	sk	skip
	spc	space	rpt	repeat
	( )	instructions	sl st	Slip stitch
			[ ]	guidance

Special Stitch	begdc3tog	Beginning dc three together	ch 2, yo, insert hook in second st, yo, pull through, yo, pull through two loops on hook (two loops left on hook), yo, insert hook in third st, yo, pull though, yo, pull through two loops on hook (three loops left on hook), yo, pull through remaining loops
----------------	-----------	-----------------------------	--

Ch 3 turns count as a stitch

Ch 1 turns do not count as a stitch

© Copyright 2019 All images and text in this document are copyright to Richard Seymour and Seyhall Crochet Design. The pattern is intended for personal use only, not commercial purposes. You do not have the right to copy, sell, share, translate to another language or publish the pattern or parts of the pattern. You have the right to make items from this pattern for sale, but you must link back to the original pattern and author.

©SeyhallCrochetDesign2019

[www.etsy.com/uk/shop/SeyhallCrochetDesign](http://www.etsy.com/uk/shop/SeyhallCrochetDesign)

## Colour sequence

Panel Green >	Beige	Blue	Black	Yellow	Orange	Green	Black	Red	white
Blue >	Green	Beige	Blue	Black	Yellow	Orange	Green	Black	Red

After the zig zag panel, the colour sequence is always two dc rounds of colour A, then one dc round of colour B, then one sc round of colour C.

## Front

Filet Zig Zag Panel

Ch 16

R 1: sc in second ch from hook, sc across [15 sc total]

R 2: ch3, dc 6, (ch, sk st, dc) x4, turn

R 3: ch 4, sk st, (dc, ch, sk st) x 2, dc 7, ch, sk st, dc, turn

R 4: ch 4, sk st, dc, ch, sk st, dc 7, (ch, sk st, dc) x 2, turn

R 5: ch 4, sk st, dc 7, (ch, sk st, dc) x 3, turn

R 6: ch 4, sk st, (dc, ch, sk st) x 3, dc 7, turn

R 7: ch 3, dc 4, (ch, sk st, dc) x 5, turn

R 8: ch 4, sk st, (dc, ch, sk st) x4, dc 5, turn

R 9 – 22: rpt R 2 – R 8 three times

R 23 – R 27: rpt R 2 – R 6

R 28: ch 1, sc 15

Do not turn

Ch 1, turn panel so you are working round the edge

Sc down first side, with 2 sc in the side of each dc stitch

corner: (sc, ch 2, sc)

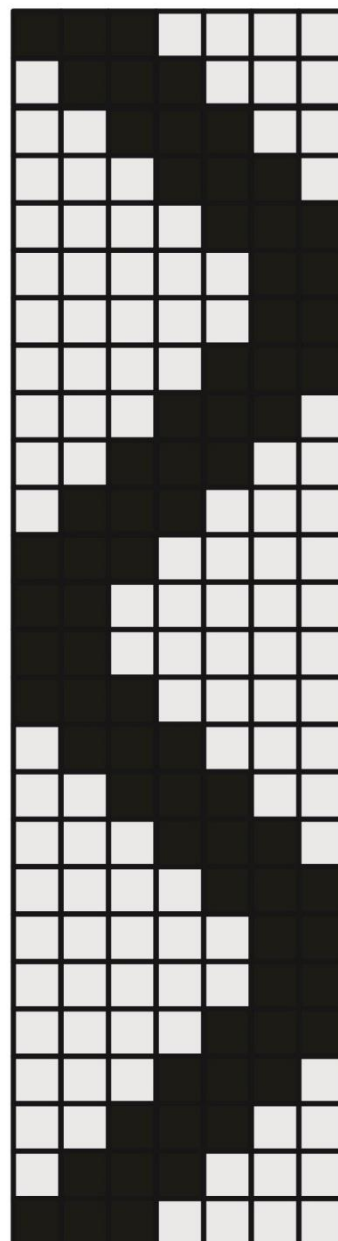
sc across, with one sc in each st

rpt corner

sc up second long side of panel, with 2 sc in side of each stitch

ch 1, sl st join to first sc of R 28

Tie off and cut yarn



With the outside of garment facing, attach yarn to the top left of panel.  
Always start a new colour in this corner.

R 1: Change colour, ch 3, dc 2 in same st as turning chain, dc in all stitches, at corner (dc, ch 4, dc) in 2 ch spc, dc in all stitches, rpt corner, dc in all stitches, in last st dc 3, turn [three sides of panel only]

R 2: ch 3, dc 2 in same st as turning chain, dc in all stitches, at corner (dc 2, ch 4, dc 2) in 4 ch spc, dc in all stitches, rpt corner, dc in all stitches, in last st dc 3, turn

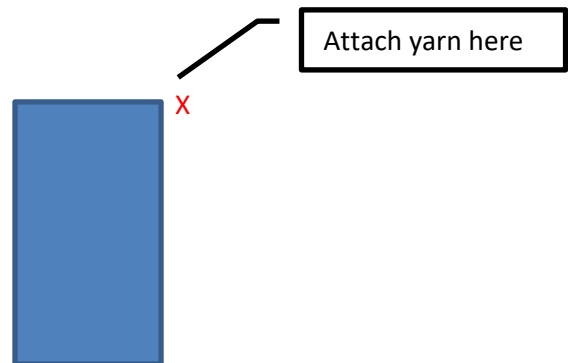
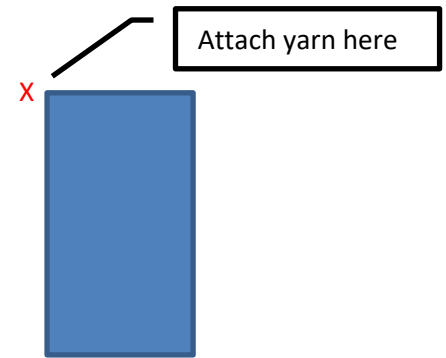
R 3: Change colour, Rpt R 2

R 4: Change colour, ch 1, sc 2 in first st, sc in all stitches, at corner (sc 2, ch 2, sc 2) in 4 ch spc, sc in all stitches, rpt corner, sc in all stitches, sc 2 in last st

R 5 – 8: Rpt R 1 – 4

Change colour

on the opposite side from usual starting place, attach yarn, ch 10, tie off and cut yarn



R 9: reattach yarn in the usual starting place, ch 12, dc in 4th ch from hook, dc 8, continue dc in all stitches, corner (dc, ch 4, dc) in 2 ch spc, dc in all stitches, rpt corner, dc in all stitches, continuing with 10 dc on the ch, turn

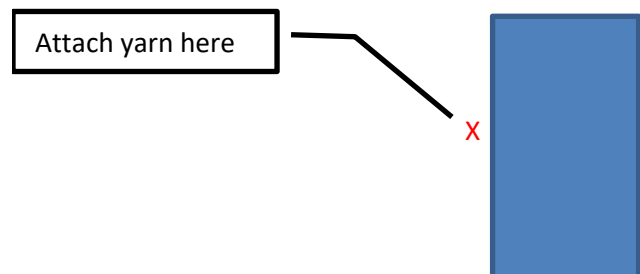
R 10: ch 3, dc in all stitches, corner (dc 2, ch 4, dc 2) in 4 ch spc, dc in all stitches, rpt corner, dc in all stitches

R 11: Change colour, rpt R 10

R 12: Change colour, ch 1, sc in all stitches, corner (sc 2, ch 2, sc 2) in 4 ch spc, sc in all stitches, rpt corner, sc in all stitches

R 13: Count down side of panel and attach new colour in the 30th stitch. Count 30 stitches down on opposite side and mark with a stitch marker

begdc3tog, dc in all stitches, corner (dc, ch 4, dc) in 2 ch spc, dc in all stitches, rpt corner, dc in all stitches, dc3tog in last three stitches including the one marked with the stitch marker, turn



R 14: begdc3tog, dc in all stitches, corner (dc 2, ch 4, dc 2) in 4 ch spc, dc in all stitches, rpt corner, dc in all stitches, dc3tog in last 3 stitches

R 15: Change colour, rpt R 14

R 16: Change colour, sc2tog, sc in all stitches, corner (sc 2, ch 2, sc 2) in 4 ch spc, sc in all stitches, rpt corner, sc in all stitches, sc2tog in last 2 stitches.

R 17: Change colour, begdc3tog, dc in all stitches, corner (dc, ch 4, dc) in 2 ch spc, dc in all stitches, rpt corner, dc in all stitches, dc3tog in last three stitches

R 18: rpt R 14

R 19: Change colour, rpt R 14

R 20: Change colour, rpt R 16

R 21: Change colour, ch 3, dc in all stitches, corner (dc, ch 4, dc) in 2 ch spc, dc in all stitches, rpt corner, dc in all stitches, turn

R 22: ch 3, dc in all stitches, corner (dc 2, ch 4, dc 2) in 4 ch spc, dc in all stitches, rpt corner, dc in all stitches

R 23: Change colour, rpt R 22

R 24: Change colour, ch 1, sc in all stitches, corner (sc 2, ch 2, sc 2) in 4 ch spc, sc in all stitches, rpt corner, sc in all stitches

R 25: Change colour, rpt R 21

## Back

### Filet Zig Zag Panel

Ch 16

R 1: sc in second ch from hook, sc across [15 sc total]

R 2: ch3, dc 6, (ch, sk st, dc) x4, turn

R 3: ch 4, sk st, (dc, ch, sk st) x 2, dc 7, ch, sk st, dc, turn

R 4: ch 4, sk st, dc, ch, sk st, dc 7, (ch, sk st, dc) x 2, turn

R 5: ch 4, sk st, dc 7, (ch, sk st, dc) x 3, turn

R 6: ch 4, sk st, (dc, ch, sk st) x 3, dc 7, turn

R 7: ch 3, dc 4, (ch, sk st, dc) x 5, turn

R 8: ch 4, sk st, (dc, ch, sk st) x4, dc 5, turn

R 9 – 36: rpt R 2 – R 8 four times

R 37: ch 1, sc 15

Do not turn

Ch 1, turn panel so you are working round the edge

Sc down first side, with 2 sc in the side of each dc stitch

corner: (sc, ch 2, sc)

sc across, with one sc in each st

rpt corner

sc up second long side of panel, with 2 sc in side of each stitch

ch 1, sl st join to first sc of R 28

Tie off and cut yarn

Change colour

Attach yarn top left as before

R 1: ch 3, dc in all stitches, corner (dc, ch 4, dc) in 2 ch spc, dc in all

Stitches, rpt corner, dc in all stitches, turn

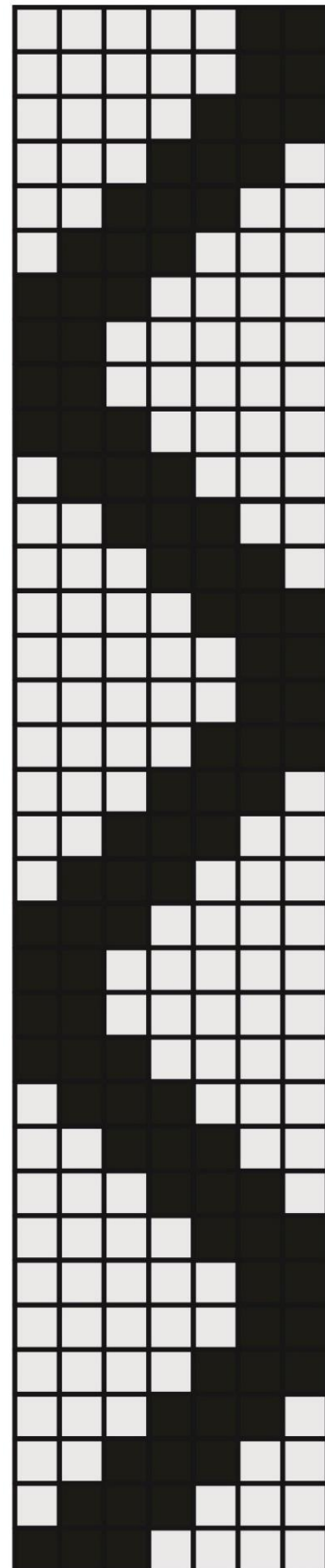
R 2: ch 3, dc in all stitches, corner (dc 2, ch 4, dc 2) in 4 ch spc,

dc in all stitches, rpt corner, dc in all stitches

R 3: Change colour, rpt R 2

R 4: Change colour, ch 1, sc in all stitches, corner (sc 2, ch 2, sc 2) in 4 ch spc, sc in all stitches, rpt corner, sc in all stitches

R 5: Change colour, rpt R 1



R 6: ch 3, dc 2 in same st as turning ch, dc in all stitches, corner (dc 2, ch 4, dc 2) in 4 ch spc, dc in all stitches, rpt corner, dc in all stitches, dc 3 in last st

R 7: Change colour, rpt R 6

R 8: Change colour, ch 1, sc 2 in first st, sc in all stitches, corner (sc 2, ch 2, sc 2) in 4 ch spc, sc in all stitches, rpt corner, sc in all stitches, sc 2 in last st

R 9: Change colour, Rpt R 1

R 10 – R 25: Rpt the same as R 10 – R 25 of front

DO NOT CUT YARN

## Joining and Finishing

Once the last round is finished you can continue to crochet join the first seam. With outside of garment front and back facing each other attach yarn to the first stitch near arm hole

Ch 1, sc through the front and back piece stitches all the way down

tie off cut yarn

crochet join the second seam in the same way, but do not tie off

ch 1, turn garment right side out, and continue with edging round hem

I chose to use the twist sc to create a rolled edge finish

Insert hook, yarn over, pull loop through and pull up to lengthen, without taking hook out turn hook anticlockwise one complete turn, yarn over, pull through two loops on hook to finish stitch

Use this around the hem and slip st join to start. Tie off and cut yarn

Arm hole join and finish

With garment inside out, attach yarn on neckline side of shoulder strap and sc join across, ch 1, do not tie off

R 1: Turn garment right side out, and sc round arm hole, with one sc in single stitches and two sc in the sides of dc stitches, sl st join to start

R 2: ch 1, twist sc round arm hole, sl st join to start

Tie off and cut yarn

Neckline finishing

Attach yarn near one of the shoulder strap seams

R 1: ch 1, sc round neck line, with one sc in single stitches and two sc in the side of dc stitches, sl st join to start

R 2: ch 1, twist sc round neckline, sl st join to start

Tie off and cut yarn